



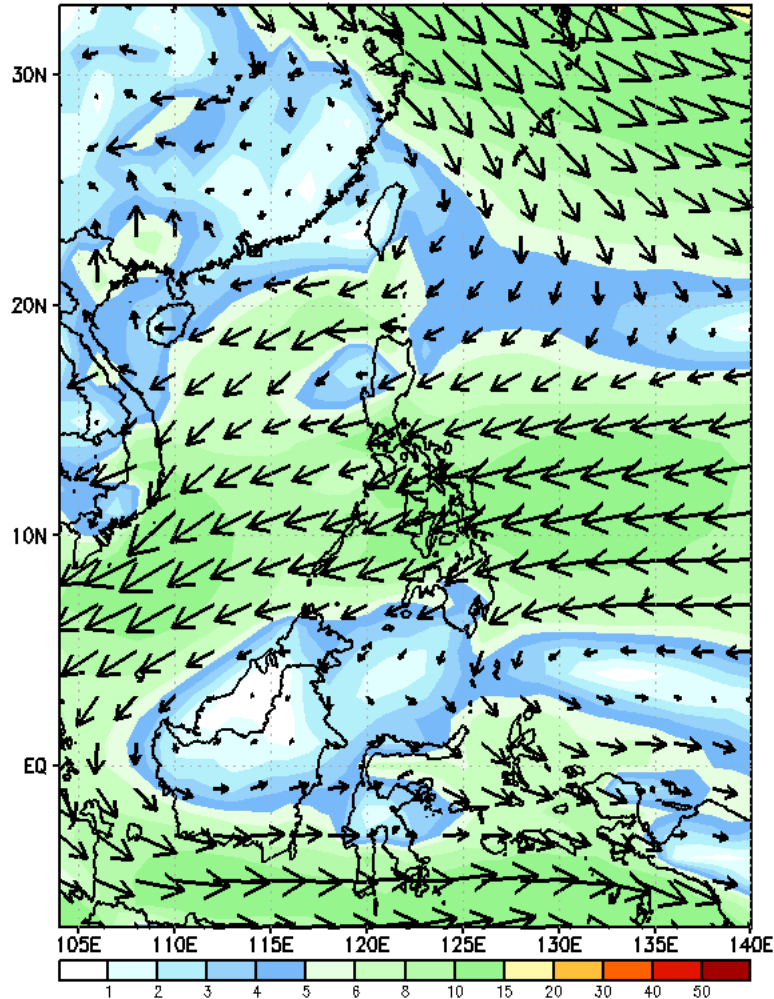
Week 1 & Week 2 Forecast for the Philippines using GEFS Model



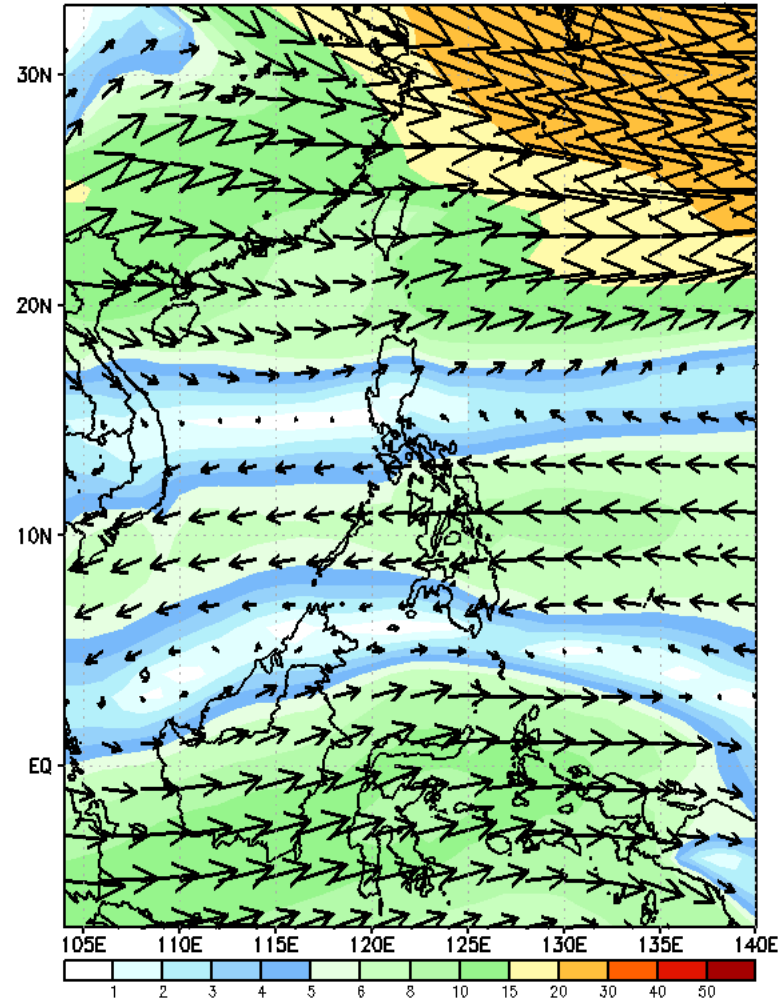
GEFS Week-1 Wind Forecasts:

Week 1: Feb 03-09, 2025

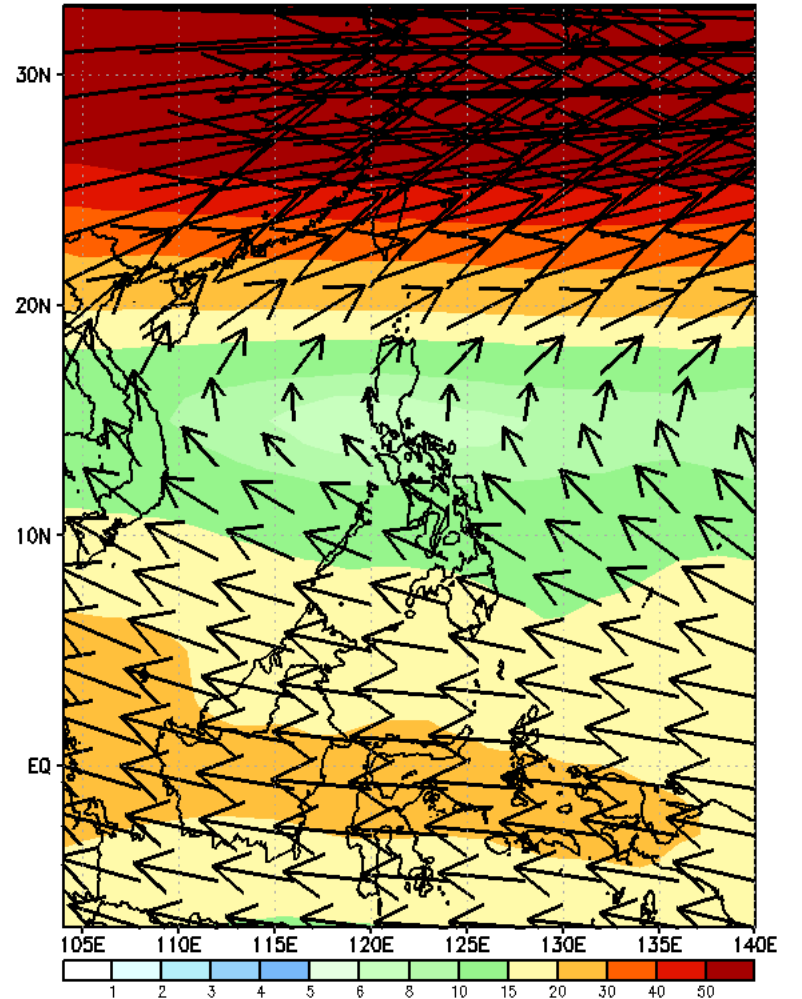
GEFS Week-1 850-hPa Wind Total
Valid: 20250203 - 20250209



GEFS Week-1 700-hPa Wind Total
Valid: 20250203 - 20250209

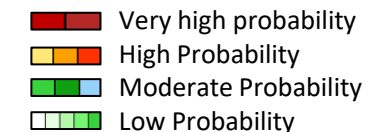


GEFS Week-1 200-hPa Wind Total
Valid: 20250203 - 20250209



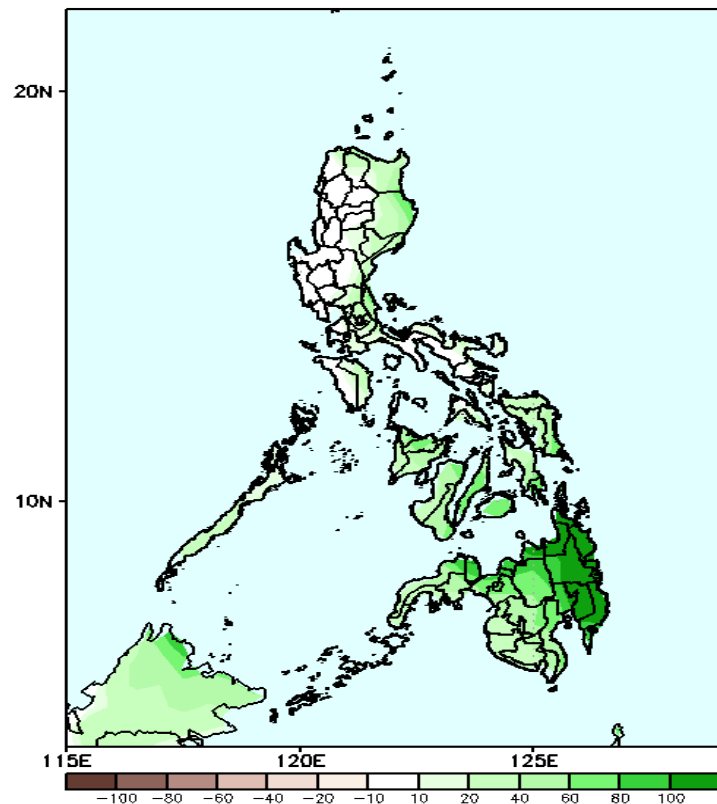
Northeast Monsoon affecting Northern and Central Luzon while Easterlies affecting the rest of the country during the forecast period

Precipitation Anomaly and Exceedance Probability > 25/50 mm



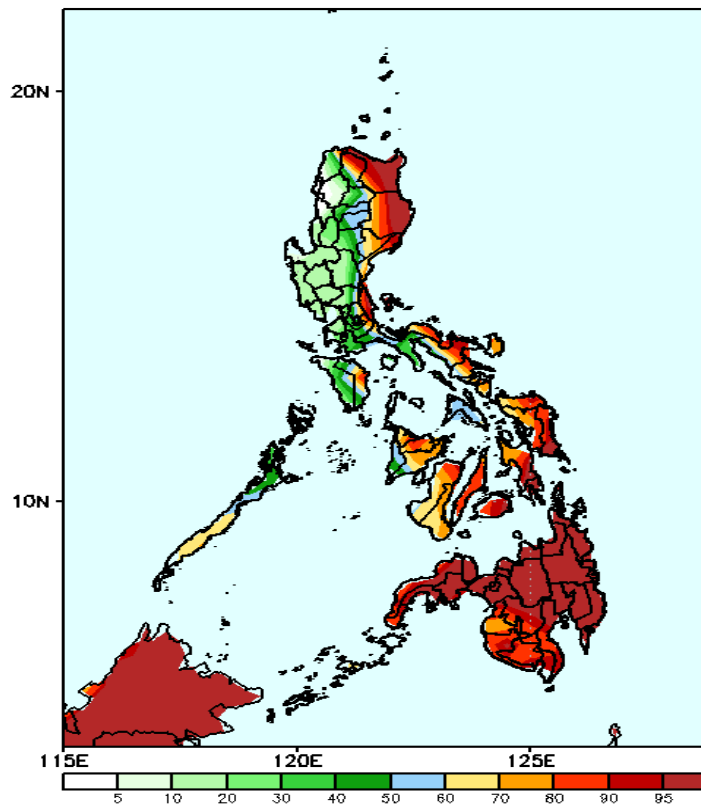
Week 1: Feb 03-09, 2025

GEFS Week-1 Precip Anomaly
Valid: 20250203 - 20250209



Increase of rainfall of 10-50mm is expected in Apayao, Cagayan, Isabela, Aurora, southern Luzon, Visayas and western Mindanao; more than 100mm increase for the rest of Mindanao.

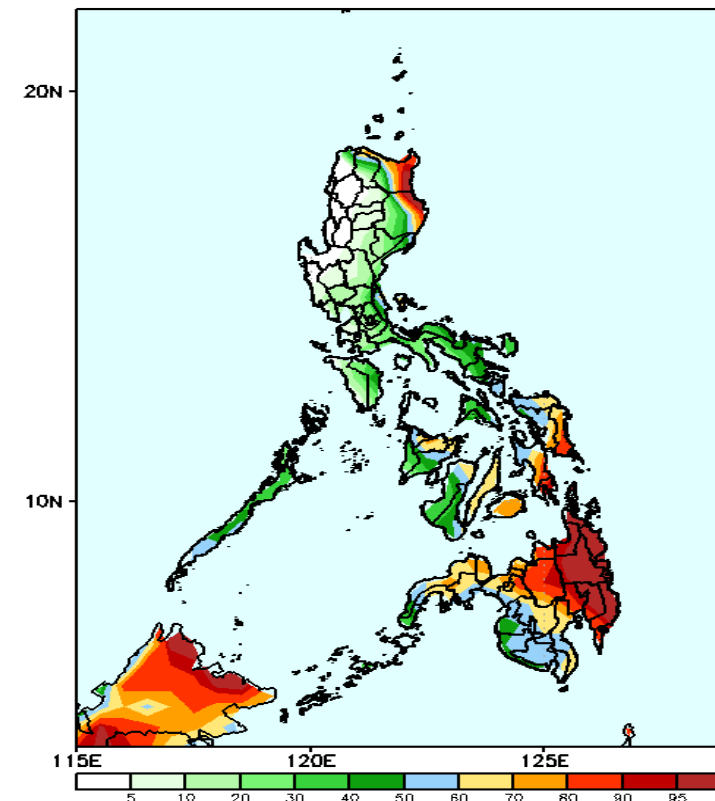
GEFS Week-1 Exceedance Prob. > 25mm
Valid: 20250203 - 20250209



Probability to Exceed 25mm

- High to very high over Batanes, Apayao, Cagayan, Isabela, Aurora, Bicol region, Eastern and Central Visayas, and Mindanao;
- Moderate to high over the rest of CAR and Visayas,
- Low to Moderate over the rest of Luzon

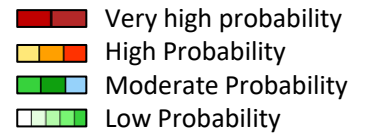
GEFS Week-1 Exceedance Prob. > 50mm
Valid: 20250203 - 20250209



Probability to Exceed 50mm

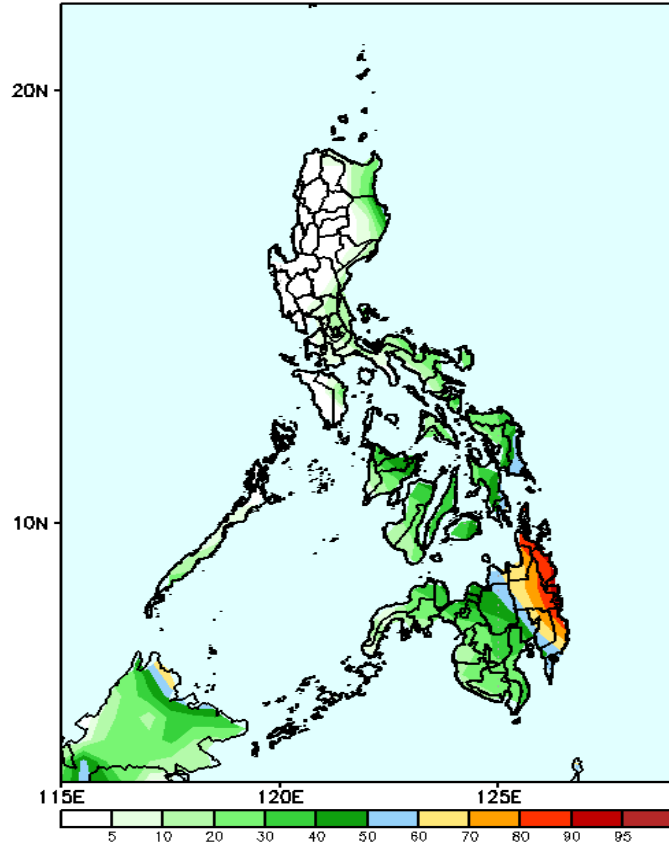
- High to very high over Eastern Mindanao;
- Moderate to high chance over Batanes, the eastern part of Cagayan and Isabela, the northern portions of Aurora, Apayao and Quezon, Bicol Region, Palawan, most of Visayas, and the rest of Mindanao;
- Low to moderate over the rest of Luzon.

Exceedance Probability > 100/150/200 mm



Week 1: Feb 03-09, 2025

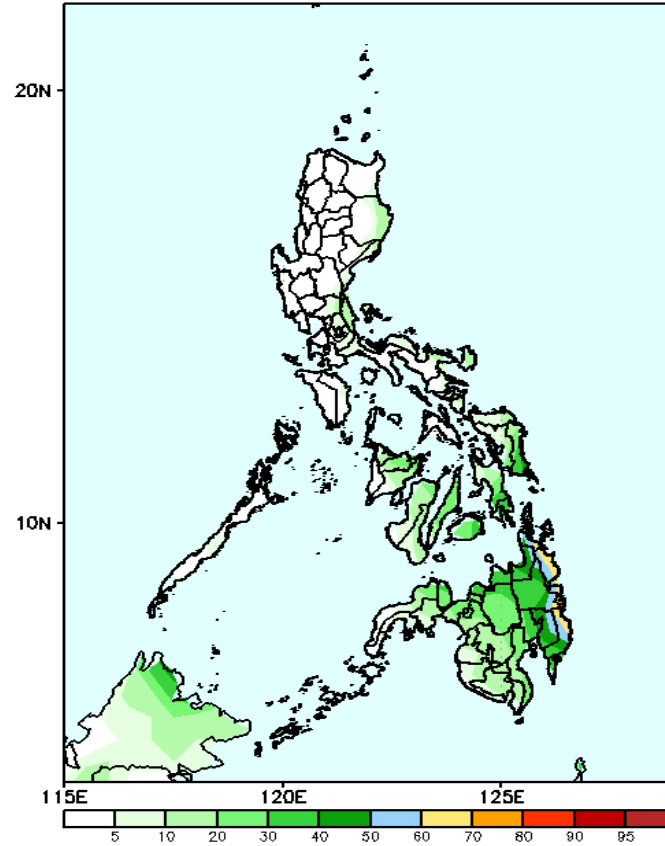
GEFS Week-1 Exceedance Prob. > 100mm
Valid: 20250203 - 20250209



Probability to Exceed 100mm

- Moderate to high over Eastern Mindanao, Southern Leyte, and Eastern Samar;
- Low to moderate over the rest of Visayas and Mindanao;
- Low over Luzon.

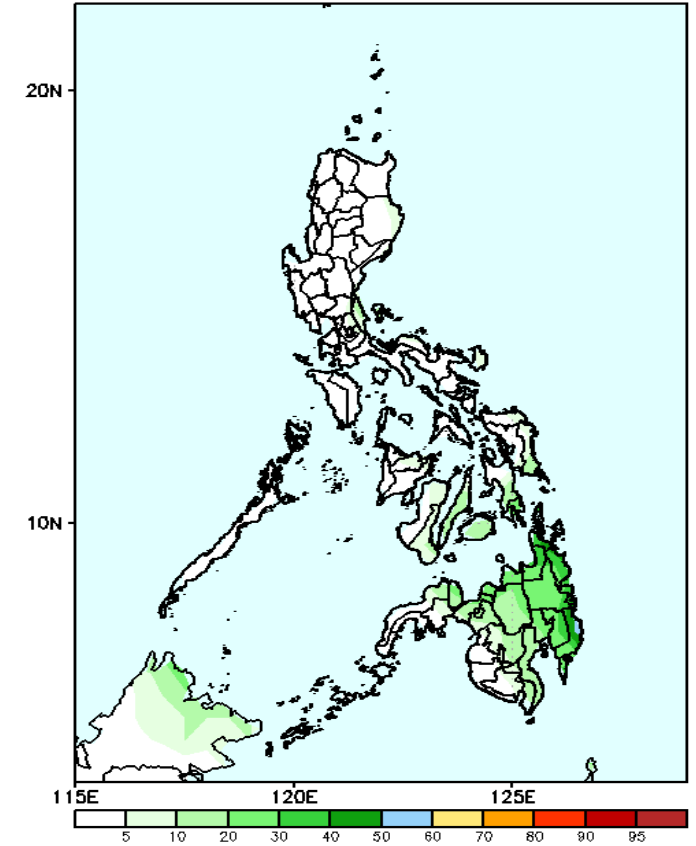
GEFS Week-1 Exceedance Prob. > 150mm
Valid: 20250203 - 20250209



Probability to Exceed 150mm

- Moderate to high over Eastern Mindanao;
- Low over the rest of the country

GEFS Week-1 Exceedance Prob. > 200mm
Valid: 20250203 - 20250209



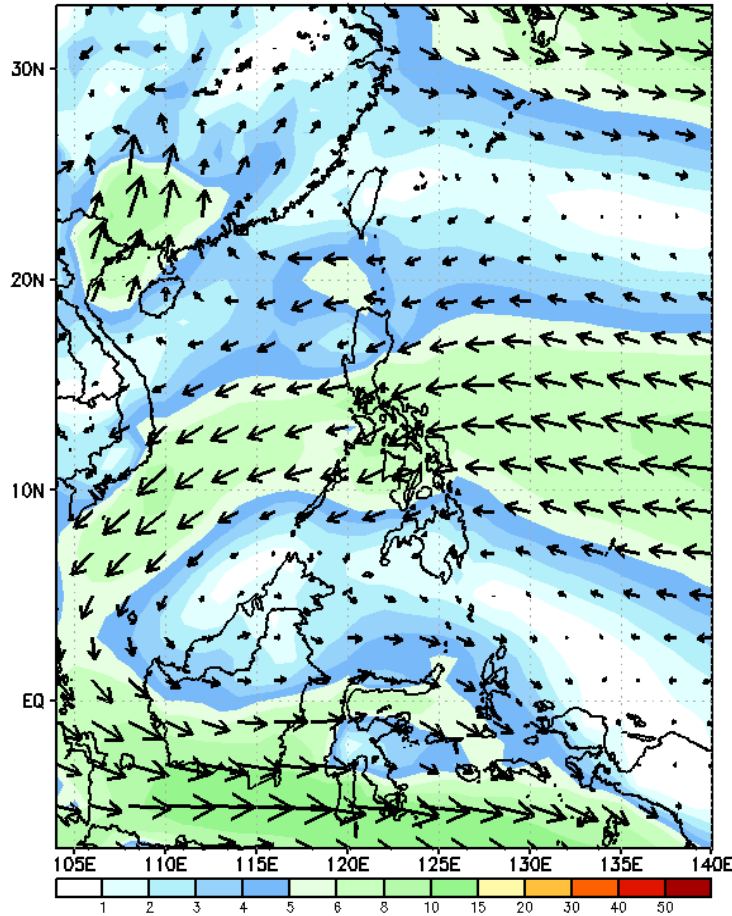
Probability to Exceed 200mm

- Low to Moderate over Eastern Mindanao;
- Low over the rest of the country

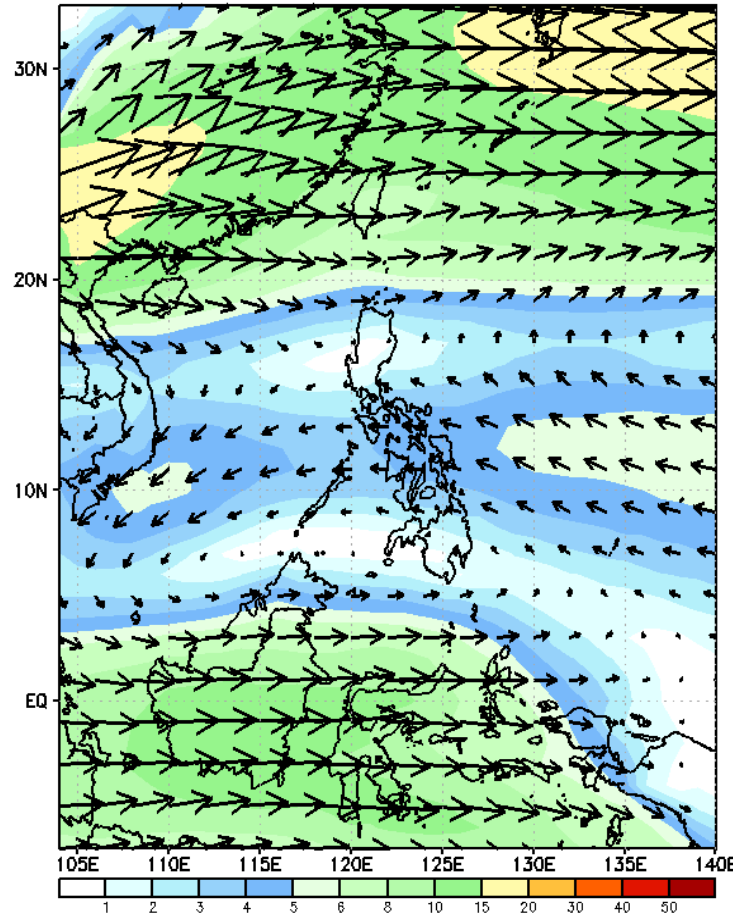
GEFS Week-2 Wind Forecasts:

Week 2: Feb 10-16, 2025

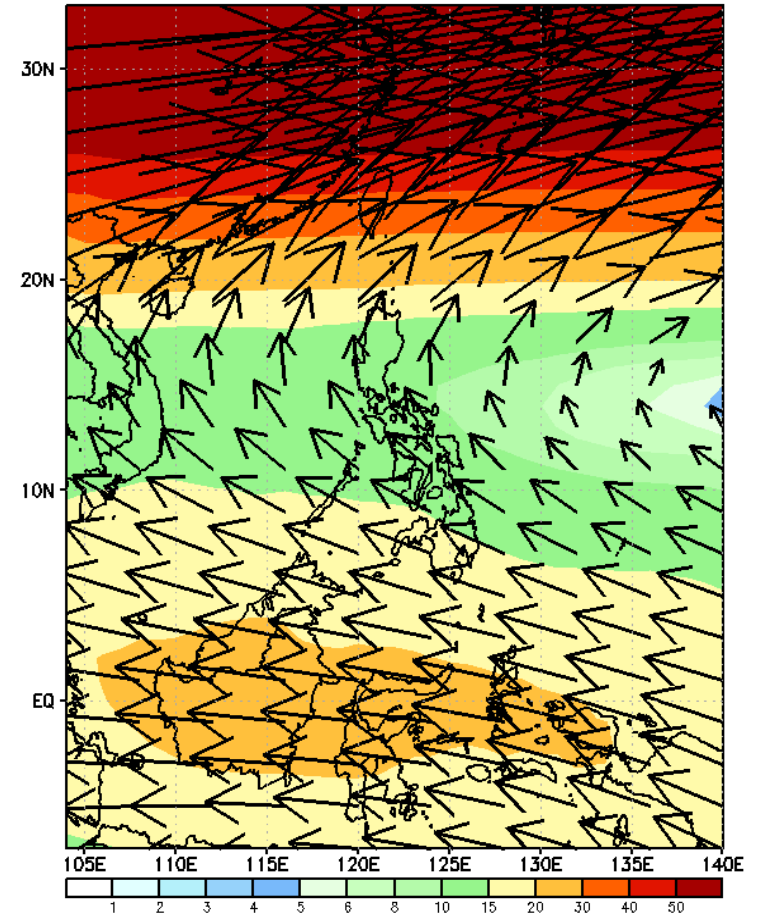
GEFS Week-2 850-hPa Wind Total
Valid: 20250210 - 20250216



GEFS Week-2 700-hPa Wind Total
Valid: 20250210 - 20250216

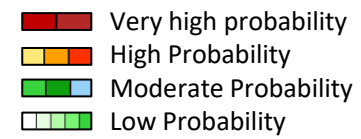


GEFS Week-2 200-hPa Wind Total
Valid: 20250210 - 20250216



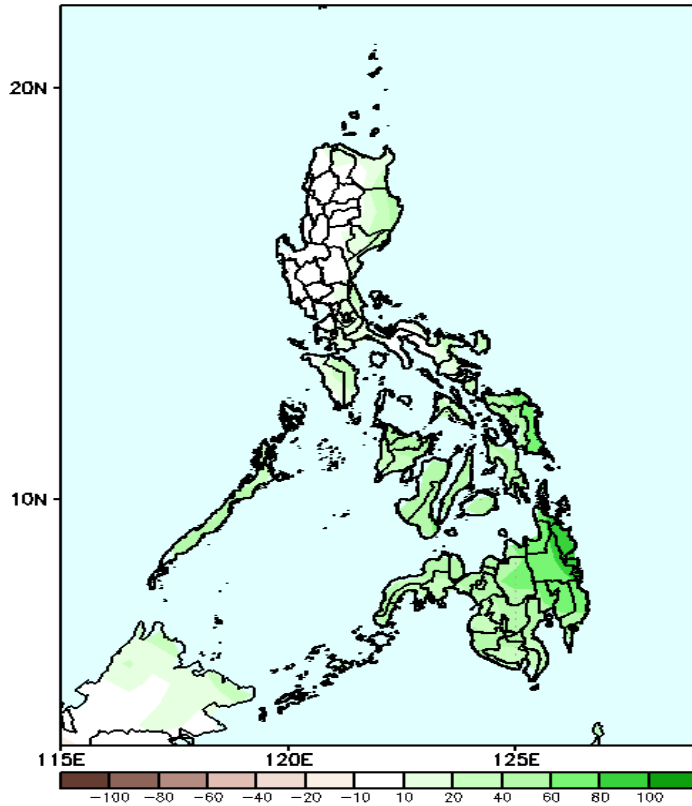
Easterlies will likely affect most parts of the country during the forecast period

Precipitation Anomaly and Exceedance Probability > 25/50 mm



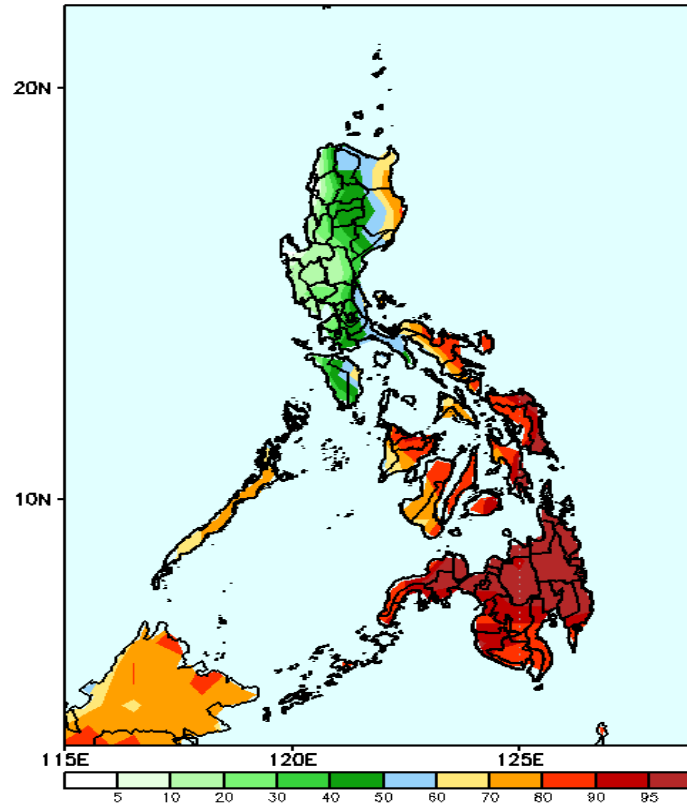
Week 2: Feb 10-16, 2025

GEFS Week-2 Precip Anomaly
Valid: 20250210 - 20250216



Increase of rainfall of 10-40mm is expected in Apayao, Cagayan, Aurora, Camarines Norte, Sorsogon; 60-100mm in Visayas and Mindanao.

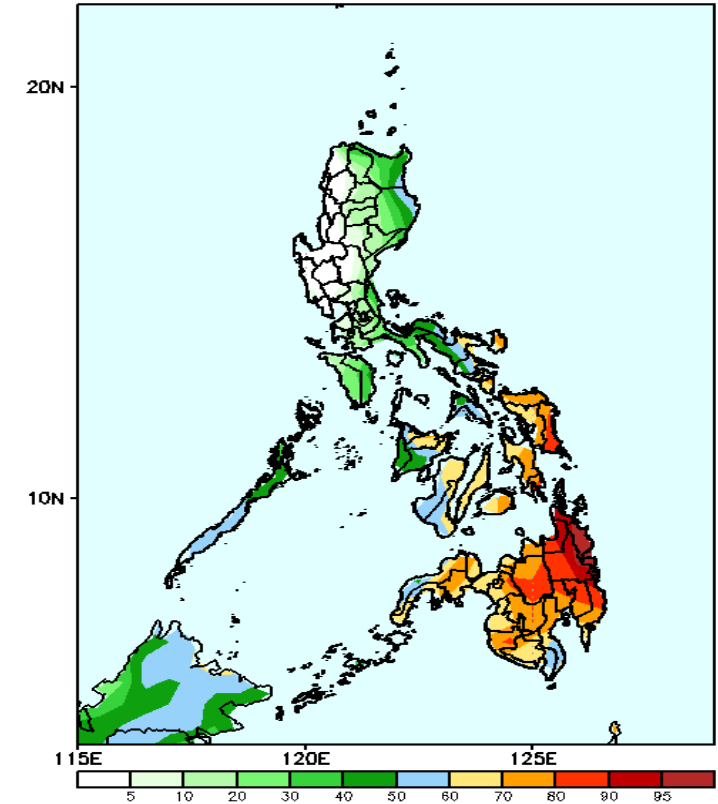
GEFS Week-2 Exceedance Prob. > 25mm
Valid: 20250210 - 20250216



Probability to Exceed 25mm

- High to very high over Eastern Visayas, and Mindanao;
- Moderate to high over northern and southern Luzon, Bicol Region, and the rest of Visayas,
- Low to Moderate over Central Luzon

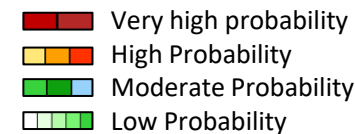
GEFS Week-2 Exceedance Prob. > 50mm
Valid: 20250210 - 20250216



Probability to Exceed 50mm

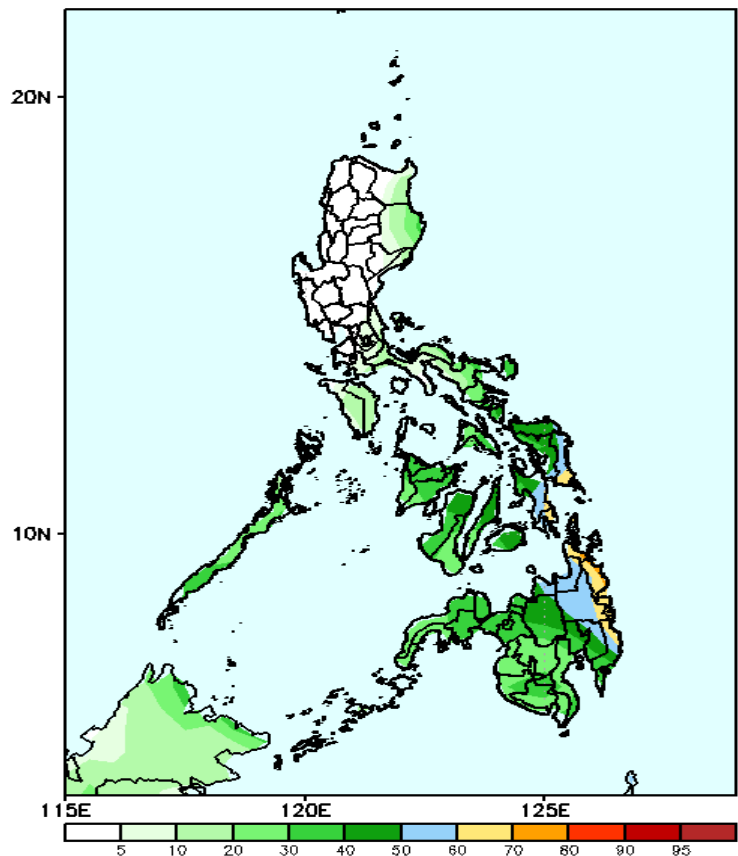
- High to very high over Eastern Mindanao;
- Moderate to high over the easternmost of Cagayan and Isabela, Bicol Region, Palawan, Visayas, and the rest of Mindanao;
- Low to moderate over the rest of Luzon.

Exceedance Probability > 100/150/200 mm



Week 2: Feb 10-16, 2025

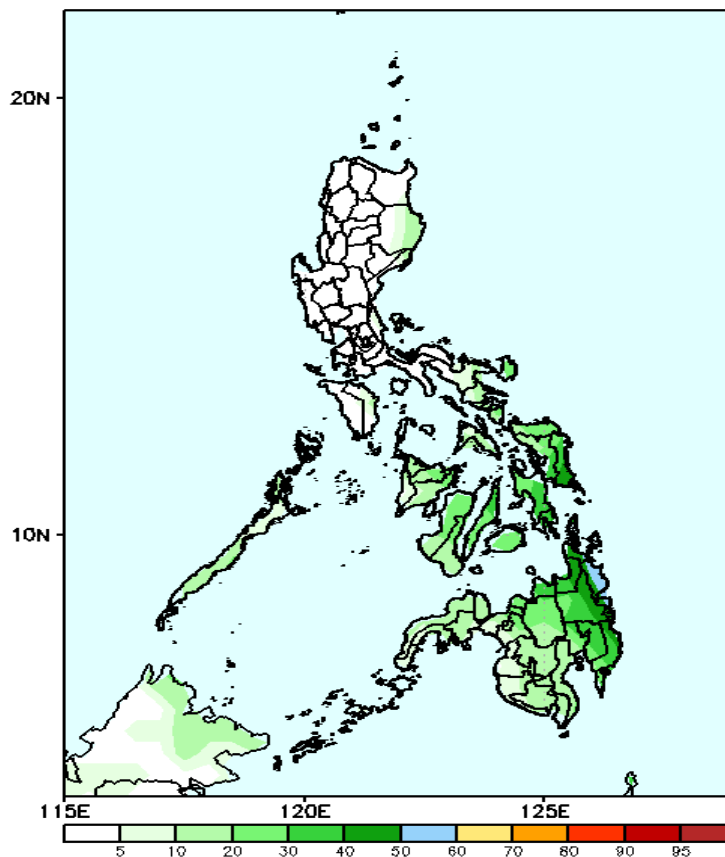
GEFS Week-2 Exceedance Prob. > 100mm
Valid: 20250210 - 20250216



Probability to Exceed 100mm

- Moderate to high over Eastern Visayas and Eastern Mindanao;
- Low to moderate over Southern Luzon and the rest of Visayas and Mindanao;
- Low over the rest of Luzon.

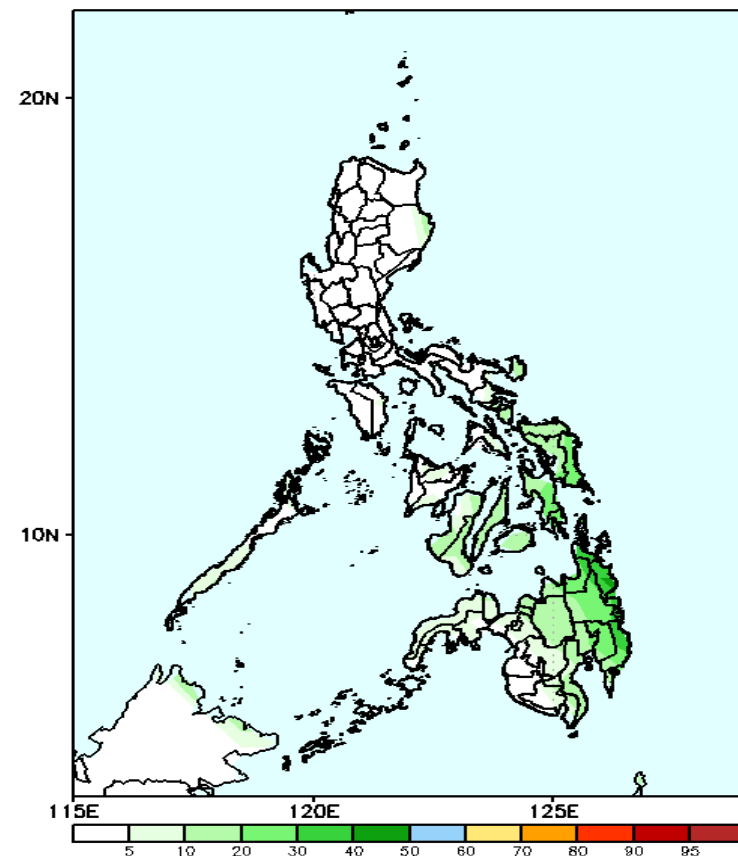
GEFS Week-2 Exceedance Prob. > 150mm
Valid: 20250210 - 20250216



Probability to Exceed 150mm

- Moderate over the southern parts of Southern Leyte, Eastern Samar and Caraga;
- Low to moderate chance over the rest of Visayas, and Mindanao.
- Low over the rest of Luzon.

GEFS Week-2 Exceedance Prob. > 200mm
Valid: 20250210 - 20250216

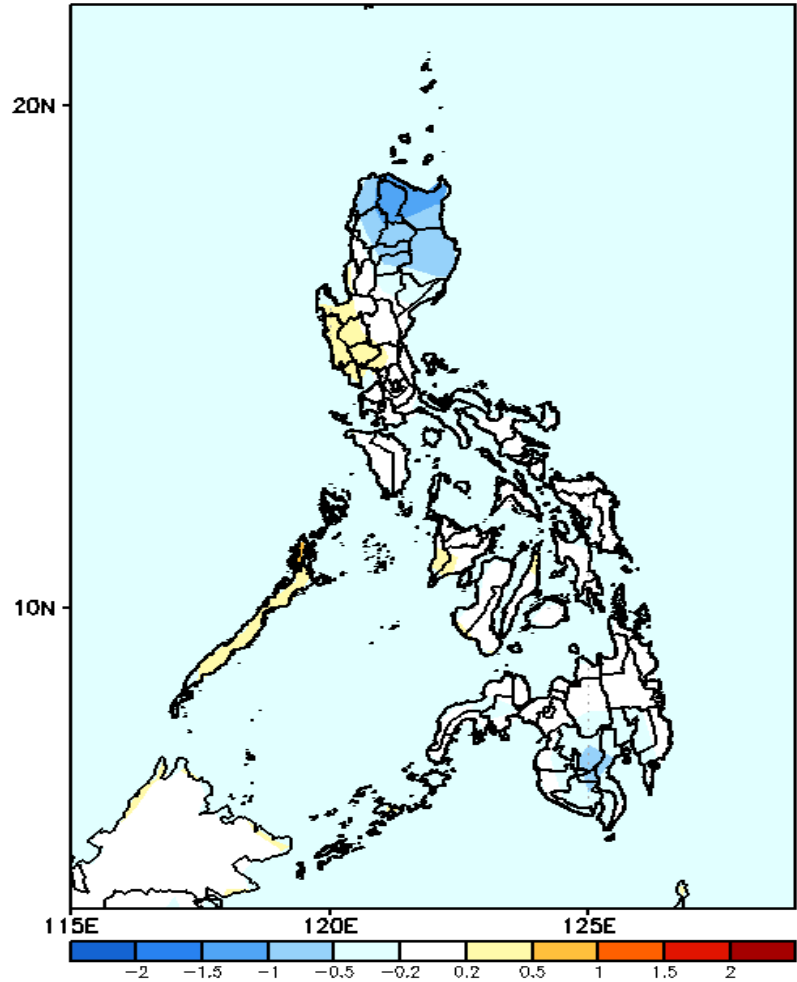


Probability to Exceed 200mm

- Low to Moderate over Eastern Mindanao;
- Low over the rest of the country.

GEFS Week-1 & 2 Forecasts: T2m Anomaly

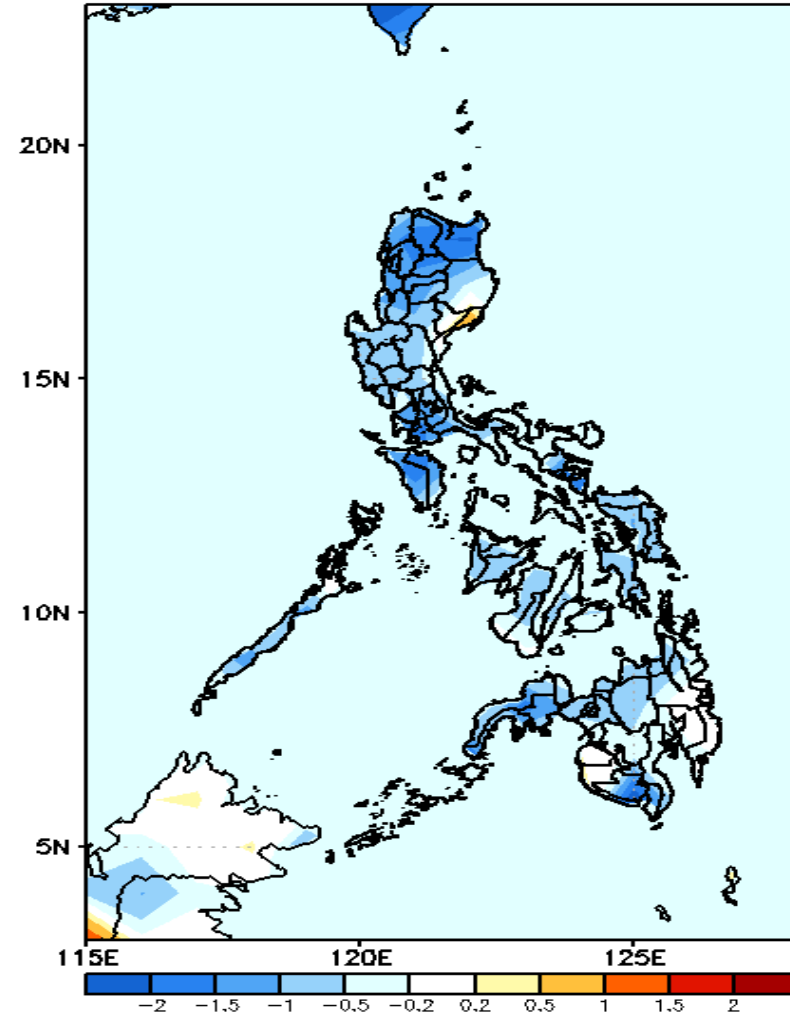
GEFS Week-1 T2m Anomaly
Valid: 20250203 - 20250209



2m Temperature Week 1: Feb 03-09, 2025

Near to slightly warmer than average surface air temperature will likely be experienced in most parts of the country except in northern Luzon where slightly cooler to cooler than average temperature is expected

GEFS Week-2 T2m Anomaly
Valid: 20250210 - 20250216



2m Temperature Week 2: Feb 10-16, 2025

Near to cooler than average surface air temperature will likely be experienced in most parts of the country.